



## WINTER 22/23 COVID & FLU

WHEN, WHERE and HOW it got there

GUIDE No.1



## SITE SAFE 19

### PROTECT THE BUSINESS GUIDE 1

FIND CASES  
REDUCE CASES  
TRACK INFECTION SPREAD



# WINTER 22/23 COVID & FLU PROJECTIONS

- 1 Winter 2022-23 Covid Prediction – UCL
- 2 Winter 2022-23 Flu Prediction – The Lancet
- 3 Combined Covid and Flu Business Disruption

SAFE & SOUND

**CORONAVIRUS (COVID-19)**



© Safe19 Ltd. 2022



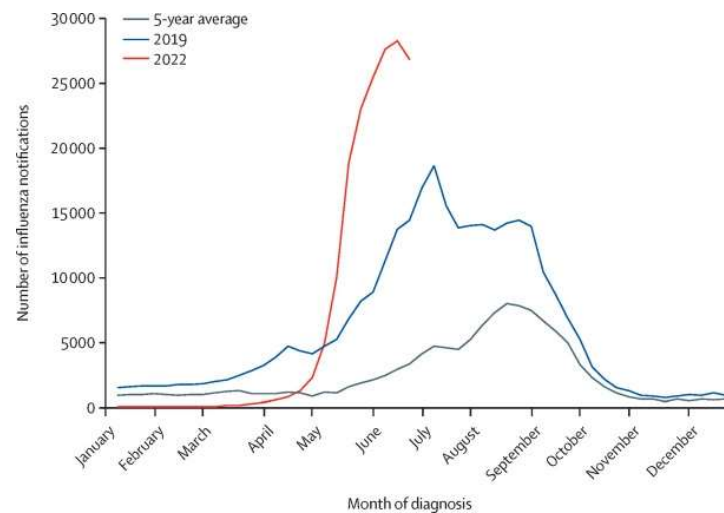
## COVID WINTER 2022 - 23

### 1 Covid Peak predicted 2023

### 2 UCL Predictions

### 3 A High Number of UK winter Covid cases Forecast

## THE LANCET Infectious Diseases



“Non-pharmaceutical interventions for COVID-19 have resulted in very low levels of circulating influenza globally. However, now that these pandemic control measures have been abandoned in the UK, the return of influenza as a major public health issue appears inevitable. There has been a rapid rise in influenza A notifications in Australia, which started earlier than usual and as of writing are tracking at record high numbers (figure). These data from Australia help predict what is to come in the northern hemisphere in the winter of 2022–23.”  
[The Lancet - Is the UK prepared for seasonal influenza in 2022–23 and beyond?](#)



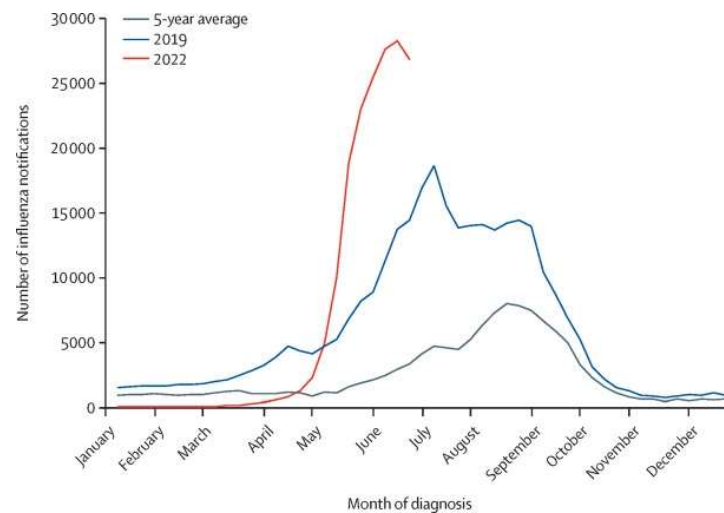
## FLU WINTER 2022 - 23

**1 Record number of cases in Australia summer 2022**

**2 These help predict Northern hemisphere figures**

**3 A High Number of UK winter Flu cases is Forecast**

### THE LANCET Infectious Diseases



“Non-pharmaceutical interventions for COVID-19 have resulted in very low levels of circulating influenza globally. However, now that these pandemic control measures have been abandoned in the UK, the return of influenza as a major public health issue appears inevitable. There has been a rapid rise in influenza A notifications in Australia, which started earlier than usual and as of writing are tracking at record high numbers (figure). These data from Australia help predict what is to come in the northern hemisphere in the winter of 2022–23.”  
[The Lancet - Is the UK prepared for seasonal influenza in 2022–23 and beyond?](#)



## FLU ABSENCES 2022 - 23

1 % Rate of Population attending Doctor

For each Doctor case, 1 ½ non Doctor cases

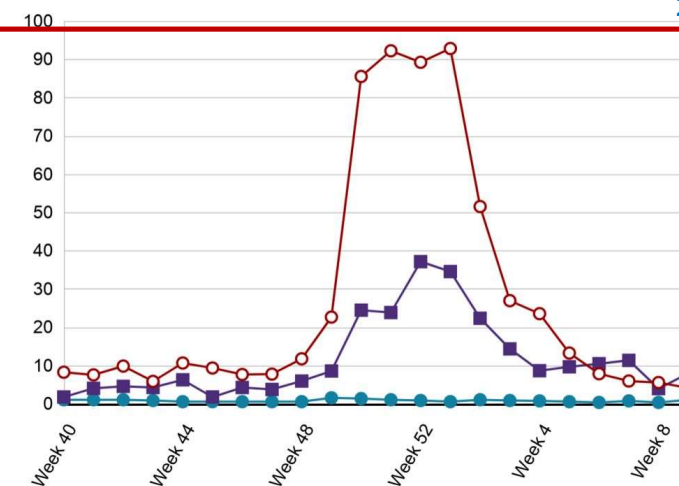
2.5 % rate of Flu Absence

### Consultation rate of Influenza-like illness in Wales

Per 100,000 population

2020-21 2019-20 2010-11

2022-23 Forecast



Source: Public Health Wales

BBC

### Flu Levels in Wales Drop in Pandemic

Consultant virologist Dr Moore said: "Any mitigation factor that we know reduces the transmission of a virus with a high transmissibility rate is likely to have a huge impact on a virus with a lower transmissibility rate. "So people not moving around, people hand washing, all of the distancing, face cover wearing, all of that has a huge impact on viruses that perhaps don't transmit as well as the Sars-Cov-2 virus.

### Notes:

For each Flu case consulting the Doctor there are 1 ½ flu cases that do not consult the Doctor - this is an estimate on the premise more people do not attend the Doctor than those who do



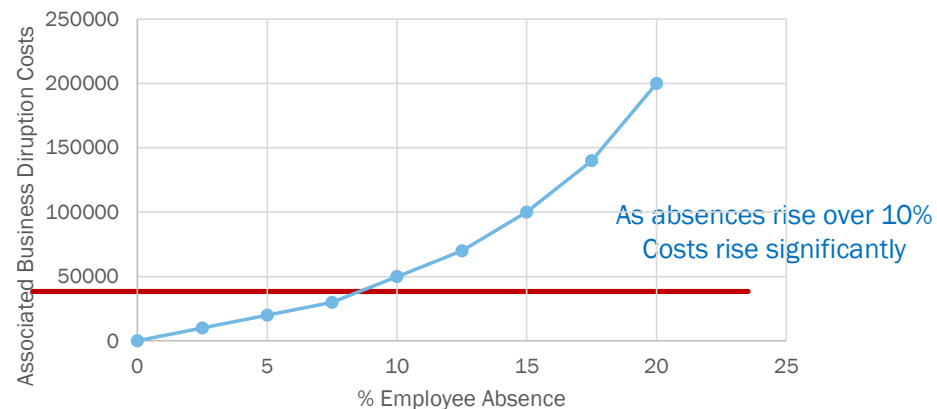
# BUSINESS DISRUPTION

**1 Low levels of Absence absorbed by the Business**

**2 Above a given threshold**

**3 Business cannot achieve required Quality and Service levels**

Business Disruption Costs



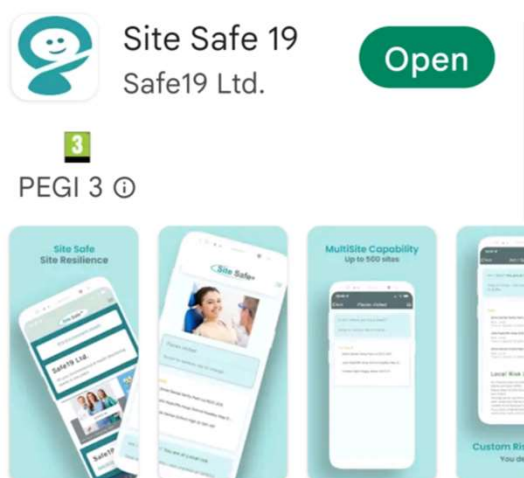
- Is your customer dependent on your service to fulfil its obligations?
- Would there be a significant impact on people's well-being if the service is not delivered?
- Is there a significant financial impact?
- Are the duties statutory?
- Is there a reputational impact if the service is not delivered?



[sales@safe19.co.uk](mailto:sales@safe19.co.uk)

Tel: 0333 3355 449

## Download - Site Safe 19 App



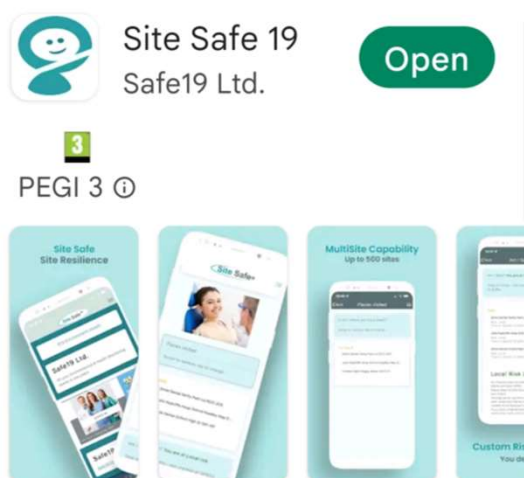
Site Safe 19 - The Simple Way to Site



[sales@safe19.co.uk](mailto:sales@safe19.co.uk)

Tel: 0333 3355 449

## Download - Site Safe 19 App



Site Safe 19 - The Simple Way to Site



Please enter your  
Start code:

**BS11Port**

SAVE